

1,700+ lumens Underwater Optic LED Light

# M6 LED

- **6061 Aluminum Anodized for protection**

- **Next generation compact high lumen LED technology**

- **1,700 Lumens 5,000K Easy white LED**

- **Low 12 volt DC power consumption**

- **Rated for 2,000m Tested at 2,500m**

- **Optional Colored lighting for marine life applications**

- **Standard connector MCBH2MSS**

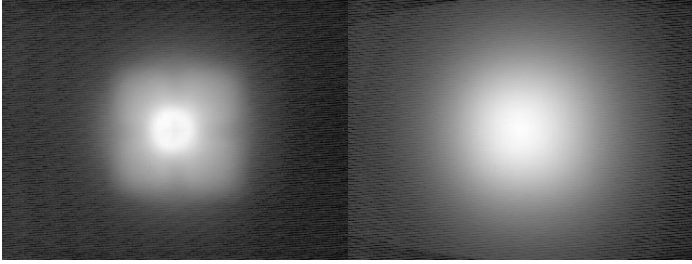
- **Many Optional Connector**



The M6 is a multipurpose underwater LED light designed for commercial divers, ROV's, inspections, and many other uses. Machined in America from 6061 Aluminum and black anodized for protection with a depth rating of 2,000 meters. Its also available in 316 grade stainless steel or Titanium with optional sapphire lens for those tougher jobs or deeper depths.

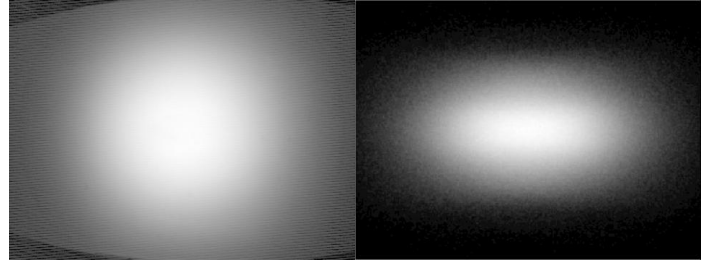
The M6 was designed with optic lens to focus and control the light output pattern. The lens come in either clear, ripple linear, or frosted finishes with different patterns. A 19° narrow spot, 28° medium spot, 48° wide spot, or a 24°x44° elliptical spot.

The M6 come standard with a 1,700 lumen Cree LED and the M6-X comes with a 4,000 lumen Cree LED. Its universal designed also allows it to be fitted with an array of different color LED like red, green, amber, blue and ultraviolet. The standard connector is a Subconn MCBH2MSS and can be fitted with many other connector and wired to customer specification.



Narrow 18° Beam

Medium 28° Beam



Wide 48° Beam

24° X 44° Elliptical Beam

Input Voltage	12V DC 1,400mA
Power Consumption	<15 Watts
Light Output	1,700+ Lumens
Color temperature	5-6,000K
Beam Angle	N/A
Pin # 1	(-) Negative Ground
Pin # 2	(+) Positive Power
Pin # 3	N/A - Not used

Material	6061 Aluminum
Lens	Acrylic
Coating	Black Anodized
Weight	15 oz
Weight in saltwater	5.3 oz
Connector	MCBH2MSS
Mating Connector	MCIL2FS
Depth Rating	2,000 meters